

5005-26.0220.2H
DS5-2B3-06-A220-50H



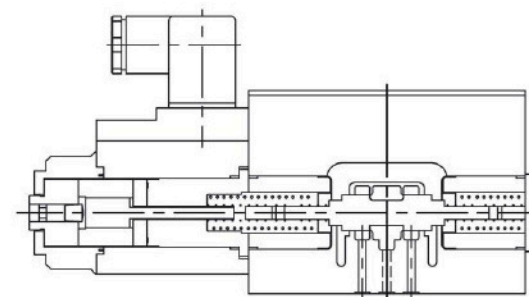
DS5
SOLENOID OPERATED
DIRECTIONAL CONTROL VALVE
WET ARMATURE

CETOP 05 (NG10)

P max.: 315 bar

Q max.: 80l/min

Q rated: 45 l/min @ Δp 2 bar



GENERAL SPECIFICATION:

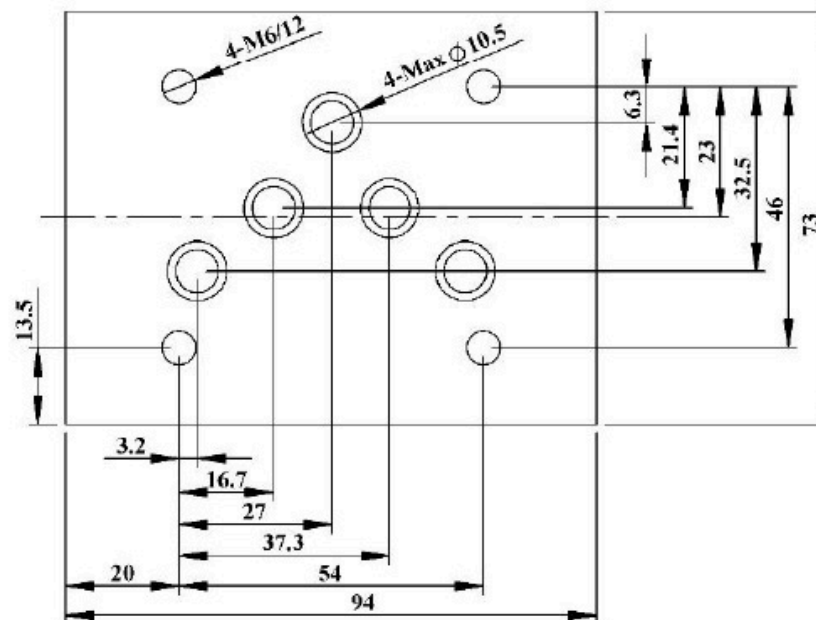
Mounting according to CETOP, NFPA standard.

Cast-iron body with passage interchangeable for various centre spools. Wet armature solenoid, movable parts immersed in oil for self-lubrication and cooling circulation. Solenoid coil of different voltage is interchangeable within the same type of supply current, i.e. alternating (A.C) or direct (D.C).

Available in 4-ways 3-positions double solenoid spring centering, 4-ways 2-positions single solenoid spring centering or 4 ways 2 positions double solenoid with mechanical detent.

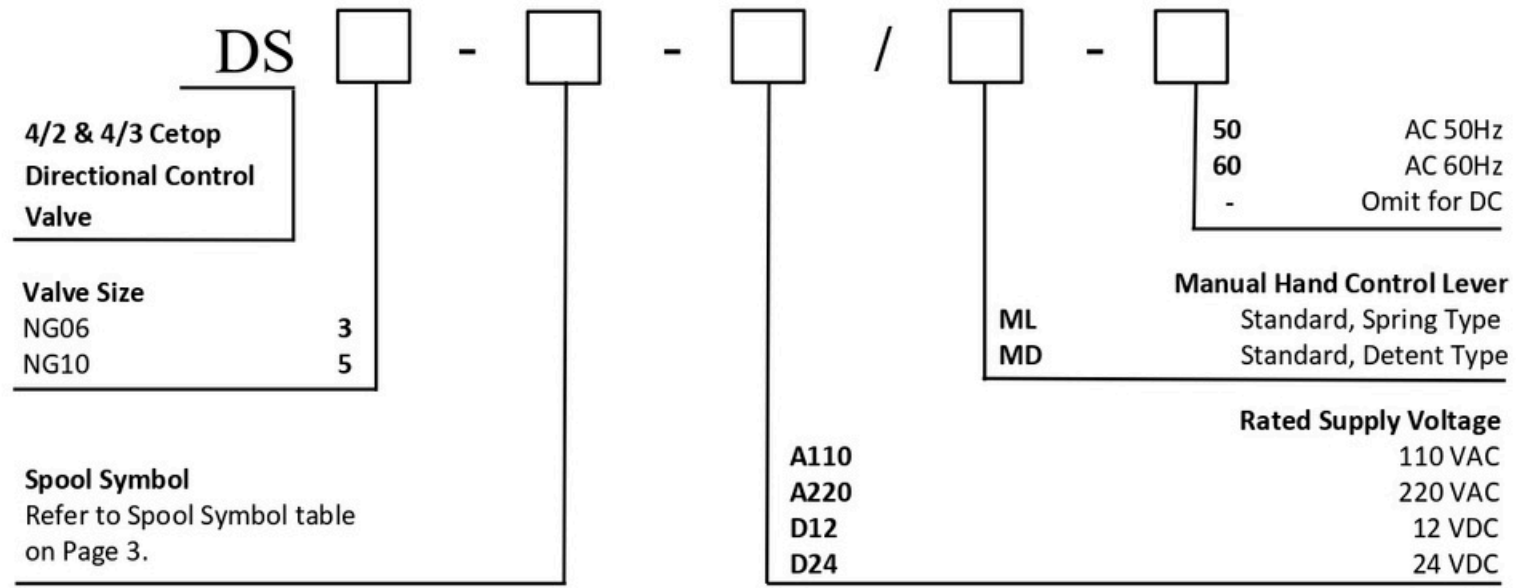
Special spools are available for wide range of application on request.

MOUNTING INTERFACE



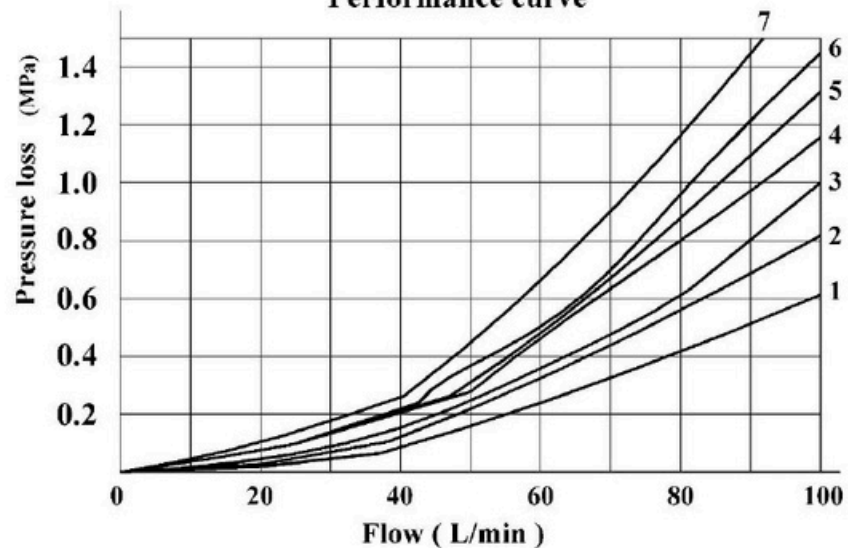
Maximum pressure P,A,B	bar	315
Maximum pressure P,A,B(3C6)	bar	250
Maximum back pressure on T	bar	140
Recommended flow rate @ Δp 2 bar	l/min	45
Working temperature range	$^{\circ}\text{C}$	5~80
Fluid viscosity range	cSt	20~300
Recommended fluid viscosity	cSt	32~46
Recommended filtration	μm	25
Mass: Single coil	Kg	3.6
Coil Voltage	Vac 50Hz	220
Current at inrush (values \pm 5%)	A	2.8
Current at holding (values \pm 5%)	A	0.54

ORDERING CODE



3C2/01		2B3/06	
3C3/02		2B3/06L	
3C4/03		2B3B/07	
3C6/04			

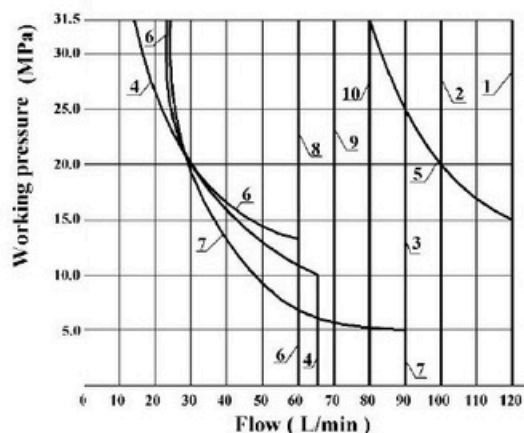
Performance curve



Function code	Direction			
	P→A	P→B	A→T	B→T
2B8,2B8L	2	2	-	-
2B3,2B2,2B2L	2	2	3	3
3C2,3C7	2	2	4	4
3C5	2	3	3	5
3C6	3	3	4	6
3C3	1	1	4	5
3C10,3C12	2	2	3	5
3C9	1	1	5	1
3C25	3	2	5	3
3C29	2	4	3	-

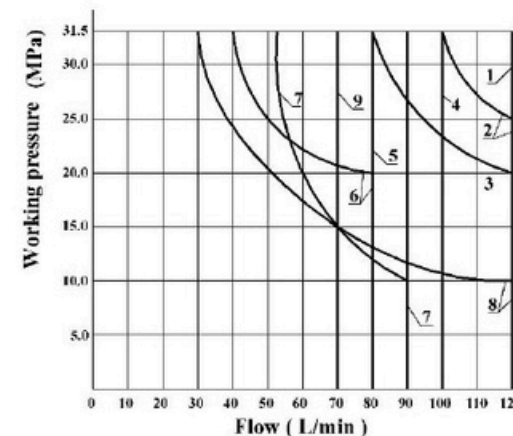
AC Solenoid operation

Curve	Symbol
1	2B3,2N3,2D3,2B2,2N2, 2D2,2B2L
2	3C2,3C10,3C12
3	3C9
4	2B8,2B8L
5	2N8,2D8,3C4
6	3C6
7	3C5,3C25
8	3C7
9	3C3
10	3C29



DC Solenoid operation

Curve	Symbol
1	2B3,2N3,2D3,2B2, 2N2,2D2,2B2L,3C9
2	3C2
3	2N8,2D8,3C10,3C12 3C4
4	3C3
5	3C29
6	3C6
7	3C5,3C25
8	2B8,2B8L
9	3C7
10	Return away



DS5-AC Alternating current