

**5000-50.0560.4H**  
**MMSB06/R3-06-06G-A**

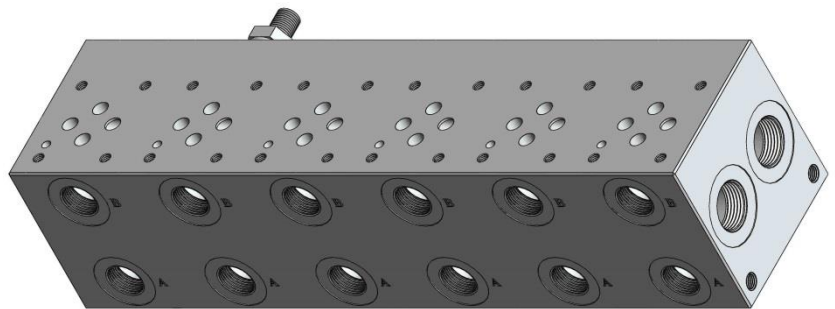
CETOP MODULAR VERSION

CETOP 03 (NG06)

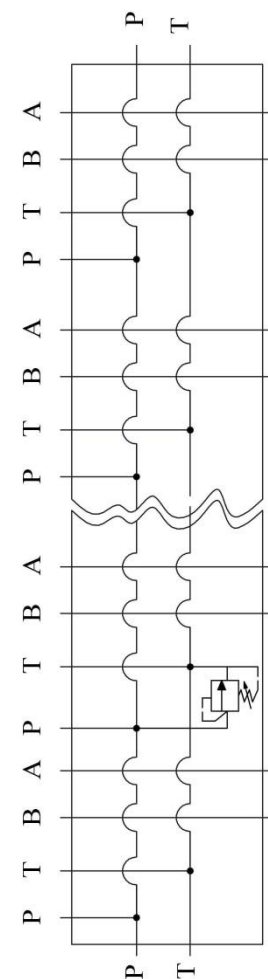
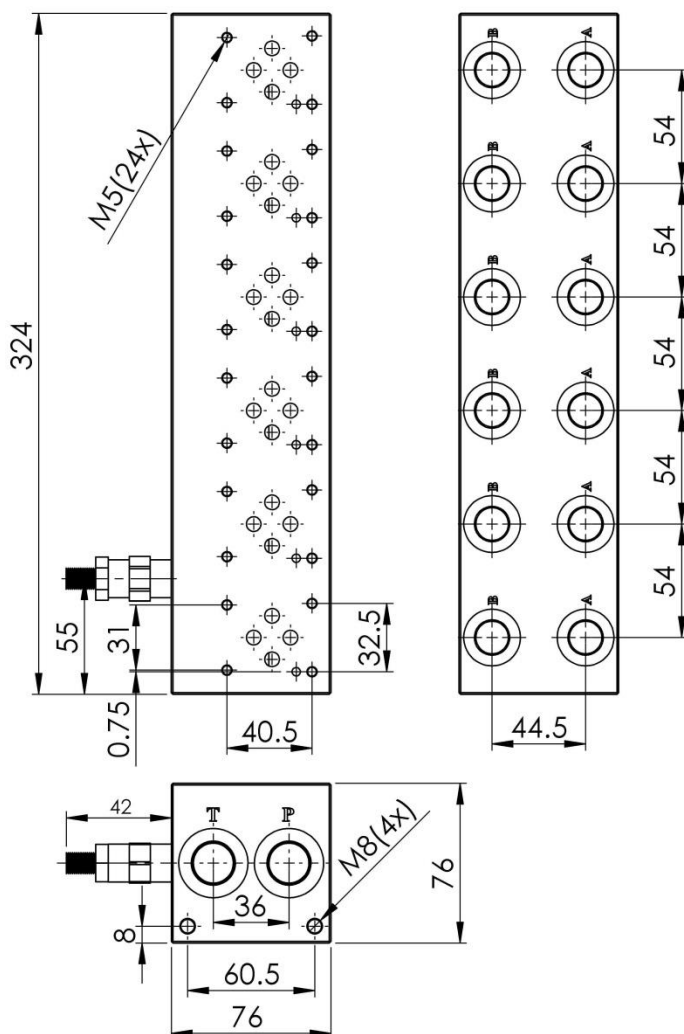
P max.:315 bar

Q max.:60 l/min

Material: Aluminum



**Oil circuit**



TYPE	P(BSPP)	T(BSPP)	A(BSPP)	B(BSPP)	Wt. Approx.(kg)
MMSB06/R3-06-06-GA	1/2"	1/2"	3/8"	3/8"	4.8

### HYDRAULIC FLUIDS

Use mineral oil-base hydraulic fluids, with suitable anti-frothing and anti-oxidizing agents.